

PREPARING YOUR HOME FOR A NATURAL DISASTER

- **Secure glass doors & windows with storm shutters or plywood.**
- **Trim or remove dead, damaged or rotting trees & limbs.**
- **Secure objects outside your home.**
- **Secure your roof, including loose shingles. Consider impact-resistant shingles.**
- **Repair or fill cracks in your home's exterior surfaces to help prevent flooding.**
- **Place plastic & sandbags around entryways.**
- **Take at least 4 photos of your home's exterior/interior before the arrival of the disaster. This will help assess any damage for insurance.**

STAY INFORMED

In the event of an emergency, listen to your radio, TV, or phone for updates.

PREPARE YOUR DISASTER SUPPLY KIT

Your kit should be tailored to your household, but don't forget:

- Plastic sheeting & duct tape
- Water (one gallon per person, per day), stored in sealed, unbreakable containers
- Non-perishable packaged or canned food (and a non-electric can opener!)
- Change of clothing, rain gear, & sturdy shoes
- Blankets or sleeping bags
- First aid kit and prescriptions
- Extra pair of glasses
- Cash
- Battery-powered radio, flashlight, and plenty of extra batteries
- Extra set of car keys
- List of family physicians
- List of important family information
- Style/serial number of medical devices such as pacemakers
- Special items for infants, elder, or disabled family members



KNOW YOUR LOCAL SHELTERS

- **Contact your local emergency management office for locations of shelter facilities/evacuation routes.**
- **Pre-plan two evacuation routes from home and work.**
- **Prepare ahead of time by knowing what you can/can't bring with you.**

BE POWER SMART

In a disaster, power can be interrupted for some time. To help make it last as long as possible, and minimize damage to property:

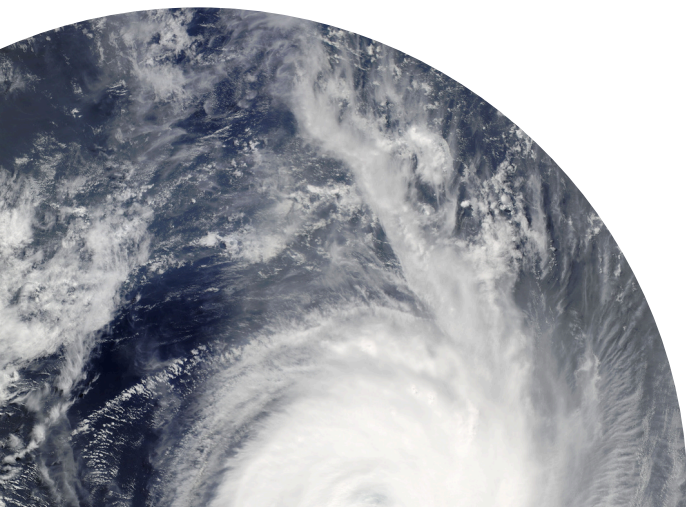
- **Keep a portable generator on-hand, as well as back-up cell phone batteries**
- **Use your phone *only* as necessary**
- **If you have medical equipment that requires power, notify your local utilities about your needs for backup or priority power restoration.**
- **If you lose power, unplug electrical appliances until after power is restored in order to prevent damage from a power surge.**

WHAT DOES "SHELTER IN PLACE" MEAN?

"Shelter in place" means finding a safe place location indoors and staying there until you are given an "all clear" or told to evacuate.

To shelter in place, take refuge in a small, interior room with few or no windows.

If evacuation is recommended, remember that is your safest option. If you cannot leave, seek a local shelter as your last resort.



Produced by: Legal Services Alabama

Legal Services Alabama is an independent, nonprofit organization that provides qualifying low-income individuals with free civil legal assistance. LSA is a statewide program serving all 67 counties in Alabama and provides a full range of services for disaster victims.

LSA Disaster Relief Hotline

877-393-2333

LSA Call Center

866-456-4995 ENGLISH

888-835-3505 ESPAÑOL



JUSTICE FAIRNESS HOPE

**Legal Services
Alabama**



JUSTICE FAIRNESS HOPE

**Legal Services
Alabama**



SHELTERING IN PLACE DURING AN EMERGENCY

**A CHECKLIST TO HELP
YOU PREPARE**